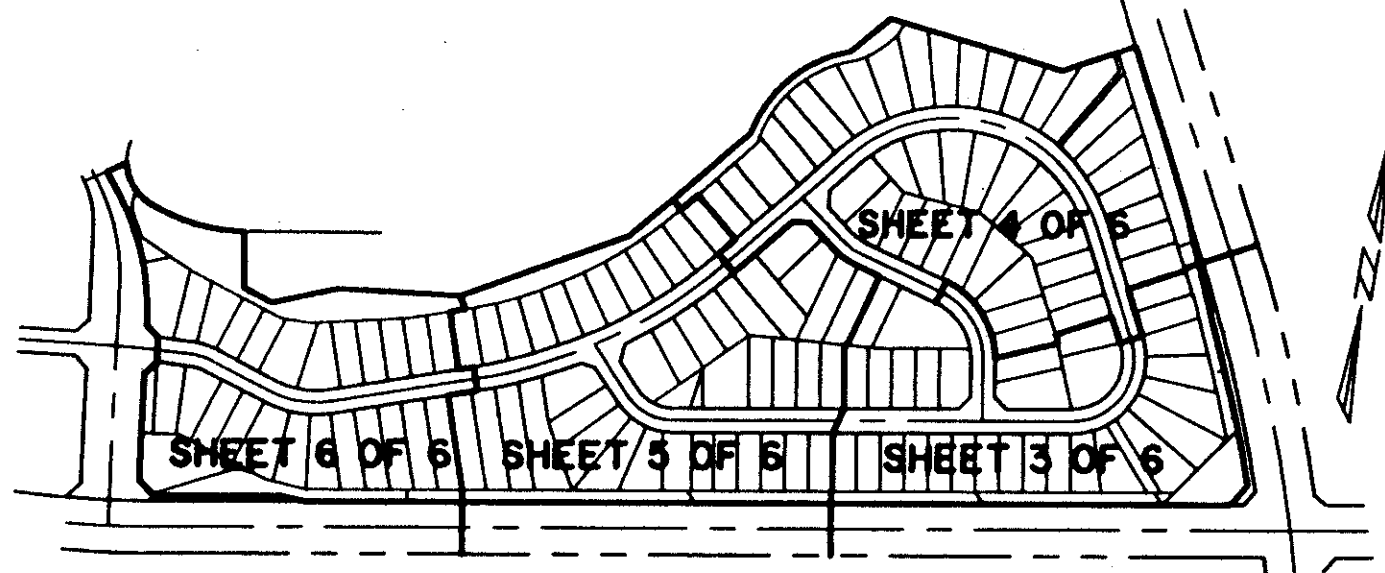


# ABERDEEN-PLAT NO. 26 REPLAT

A PORTION OF A PLANNED UNIT DEVELOPMENT  
 LYING IN SECTIONS 15 AND 16, TOWNSHIP 45 SOUTH, RANGE 42 EAST,  
 BEING A REPLAT OF A PORTION OF ABERDEEN-PLAT NO. 26 AS RECORDED IN  
 PLAT BOOK 79, PAGES 2 THRU 7, PUBLIC RECORDS OF PALM BEACH COUNTY, FLORIDA.  
 SHEET 5 OF 6 OCTOBER, 1997

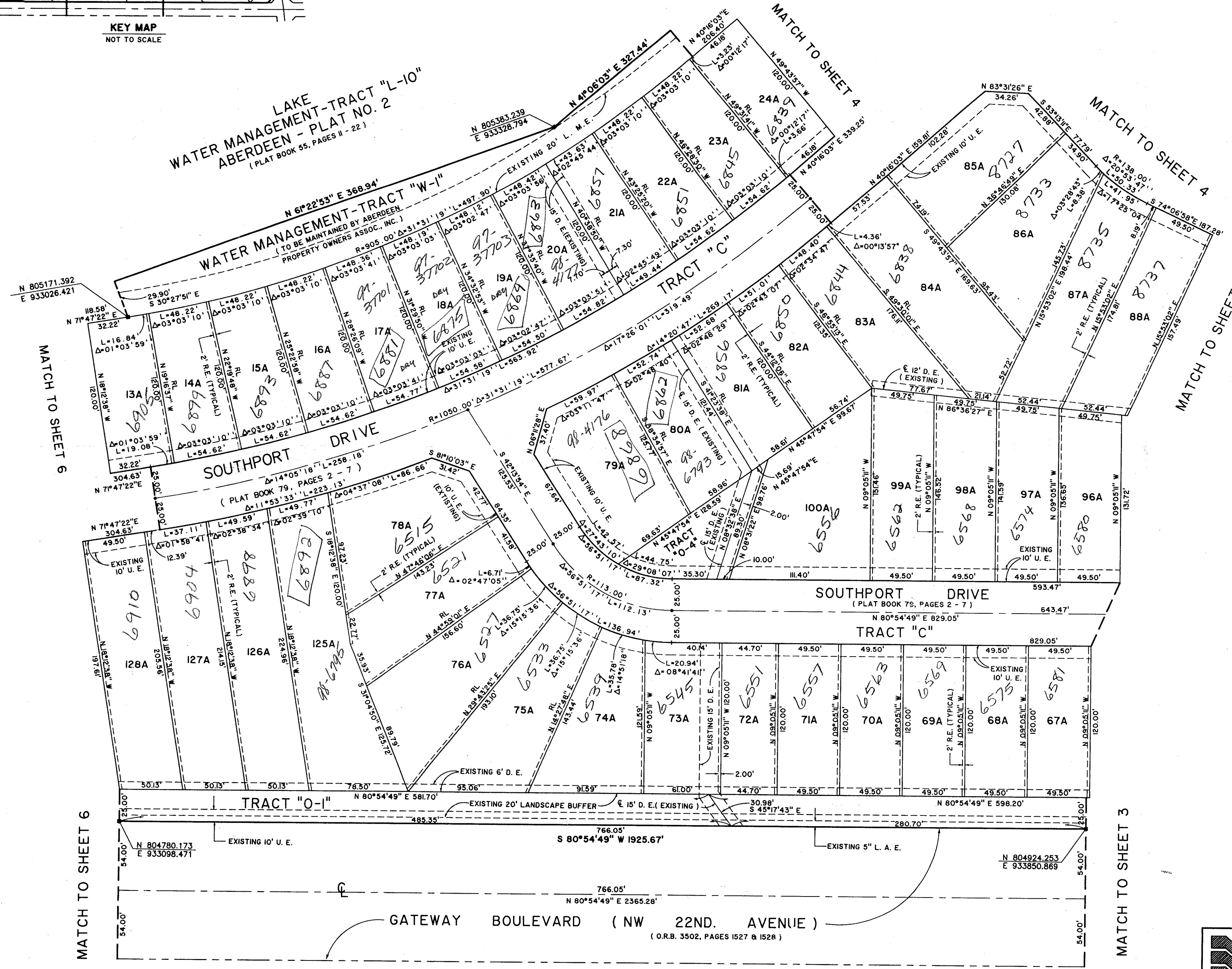
0270-032

98



KEY MAP  
NOT TO SCALE

STATE OF FLORIDA  
 COUNTY OF PALM BEACH  
 THIS PLAT WAS FILED FOR RECORD AT \_\_\_\_\_  
 M. THIS DAY OF \_\_\_\_\_ 19\_\_\_\_  
 AND DULY RECORDED IN PLAT BOOK NO. \_\_\_\_\_  
 ON PAGE \_\_\_\_\_  
 DOROTHY H. WILKEN, CLERK OF THE CIRCUIT COURT  
 BY \_\_\_\_\_ D.C.

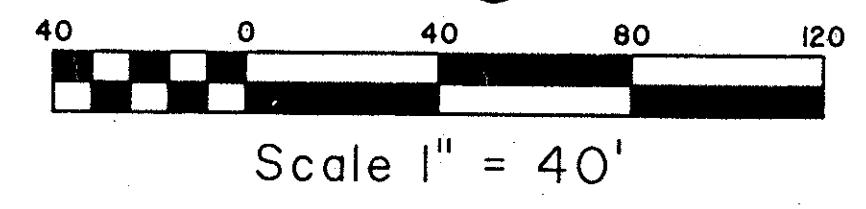


*Det. 80-153E  
 #0001  
 5/2/2/I*

**COORDINATE NOTE:**  
 STATE PLANE COORDINATES SHOWN ARE GRID DATUM, NAD 83 1990  
 ADJUSTMENT, FLORIDA EAST ZONE, COORDINATE SYSTEM 1983 STATE  
 PLANE, TRANSVERSE MERCATOR PROJECTION  
 LINEAR UNIT = US SURVEY FEET  
 ALL DISTANCES ARE GROUND  
 SCALE FACTOR = 1.000293  
 GROUND DISTANCE X SCALE FACTOR = GRID DISTANCE  
 S 88°36'17"W (PLAT BEARING) -0°45'15" COUNTERCLOCKWISE ROTATION  
 S 89°38'28"W (GRID BEARING) PLAT TO GRID  
 THE SOUTH LINE OF SECTION 15, TOWNSHIP 45 SOUTH, RANGE 42 EAST.

*Pool*

*82/98*

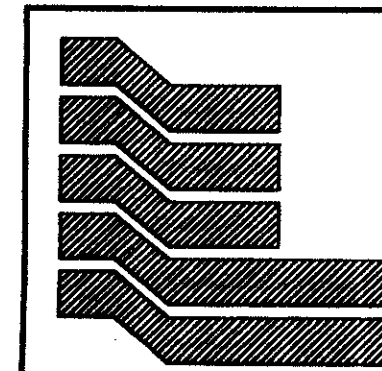


REPLAT  
 PAGE 98  
 FLOOD MAP #175A  
 ZONING RS  
 QUAD #49+24  
 BE 80-153  
 PUD NAME Aberdeen

*TAB 442*

UTILITY SITE, LE CHALET PLAT NO. 1  
 (PLAT BOOK 31, PAGES 166 & 167)

*0270-032*



Landmark Surveying & Mapping Inc.  
 1850 Forest Hill Boulevard  
 Ph. (561) 433-5405 Suite 100 W.P.B. Florida

ABERDEEN-PLAT NO. 26 REPLAT